



Innovation  
that excites

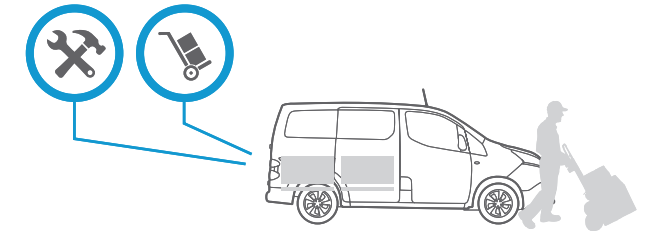
# NISSAN e-NV200

Zero Emission™



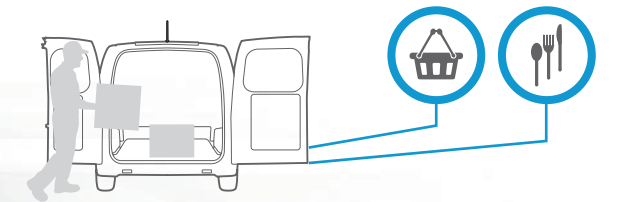
# Ready to change your business? get ready to go electric.

Over 15,000 vehicles on the road across Europe, the 100% electric Nissan e-NV200 comes now with more punch with its new 40kWh battery! Using the same battery technology as the one fitted in the award-winning 100% electric New Nissan LEAF, you get breakthrough and innovative benefits for your business. It's a payoff from the start, driving 100% electric gives you a whole new way to drastically lower your running costs while instantly giving your business an environmental and sustainable new direction. With the e-NV200, you open a new era for your business. Work will never be the same again.



#### LOAD UP WITH EASE

e-NV200s cargo area can easily fit two Euro pallets by length and as the battery is integrated into the floor, e-NV200 offers you a large cargo area.



#### SET IT UP YOUR WAY

Your rear cargo space is functional and versatile, with flat walls for easily mounting upfitter racks and bins.



**DRIVING RANGE**  
**200 KM** COMBINED CYCLE  
**301 KM** CITY CYCLE

(WLTP HOMOLOGATION)



**QUICK  
CHARGE**



**WALL  
BOX**



**3 PIN PLUG**

**4 DRIVING MODES TO MAXIMIZE YOUR RANGE.**

D Mode is best suited for motorway driving, use of cruise control increases the energy consumption. Eco Mode gives you extra driving range by automatically adjusting the acceleration response and the climate control system. Now that's power you can work with. The B Mode will increase the strength of the regenerative braking system. It acts as engine break on an ICE car. The B Mode and Eco Mode, combined, gives you best range saving, using the smooth acceleration of Eco mode and regenerative braking of B-mode.

# Work with the power and range of the 40kWh battery.

Start the day ready to go on a full charge, with a driving range from 200 to 301 km (combined to city WLTP cycles) for all of your drop-offs, pickups, appointments and deliveries. Nissan e-NV200 offers you 3 charging modes: You can charge up to 80 % in about 40 to 60 minutes with the fast charge port, or fully charge in about 7.5 hours with a wall box using the 6.6kW on-board charger. Alternatively, using the EVSE cable and a regular 3 Pin socket, charge to 100% in about 21.5 hours at home or in the workplace. You just have to pick the most convenient charging mode. And with its regenerative braking system, the e-NV200 is engineered to help you get the most out of every charge by sending power back to your battery any time you coast, decelerate or brake.



\*Time dependent on charging conditions, including Quick Charger type and condition, battery size as well as ambient & battery temperature at point of use.



#### CREATING NEW BUSINESS OPPORTUNITIES

Because the e-NV200 is a zero emission vehicle with no engine noise, you can quietly make night time deliveries in residential areas and use it in indoor and protected areas. No more noise and CO<sub>2</sub> pollution for your customers and your working environment.

**LOW**  
RUNNING COST  
MAINTENANCE

**NO**  
DIESEL  
OIL CHANGES  
EMISSIONS

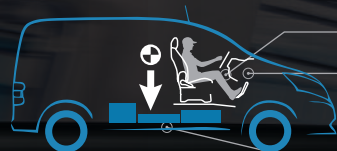
**HIGH**  
EFFICIENCY:  
80 KW (109 HP)  
SAVINGS & BENEFITS

## Lower your costs. boost your efficiency.

Imagine never having to spend money for fuel, oil changes or transmission service. That's what happens when you go 100% electric with the e-NV200. And in addition to saving money with low running costs, you save time. Because you never stop at the petrol station, and there's far less vehicle downtime for maintenance. Best of all, your incredibly cost-efficient vehicle is the most environmentally friendly mass-produced van on the market – so silent and clean, you can make nighttime residential deliveries and access protected and indoor areas without causing any disturbance. Finally, a vehicle for your business that opens new business opportunities.

# A better drive, a better workday.

There's nothing like driving electric, the sensation of quietly gliding along, no engine noise or vibration. Add to that a driver-focused cabin that includes class-leading leg room and high, truck-like seating for greater visibility, and you're looking at happier, less fatigued, more confident drivers. All that with the comfort of an automatic gearbox (that increases driving pleasure), exceptionally agile handling (thanks to a low centre of gravity and 15" wheels), instant EV torque for quick smooth acceleration, and a tight turning radius for easy maneuverability, the e-NV200 may just become your best team member on the job.



Class-leading driver leg room = more comfort

Truck-like seating = greater visibility  
Heated seat = more comfort

Battery distribution = low centre of gravity



**RearView Monitor** makes tight parking spots more inviting. This available feature shows you a view of the area behind you and superimposes guidelines to help you position the e-NV200 exactly where you want it.

The e-NV200 has an incredibly tight 11.1 m turning diameter that helps you negotiate narrow streets and tight parking structures, while pulling up as closely as possible for loading and deliveries.



**11.1 M**

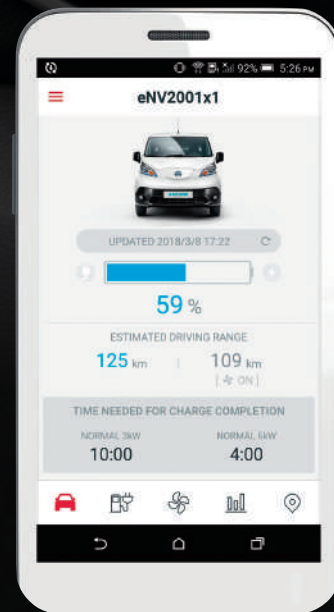




## NISSANCONNECT EV NAVIGATION

In the SV PreMIUM, NissanConnect EV advanced telematics system puts your business miles ahead by letting you digitally track and exchange data.

- Eliminate tedious paperwork by digitally tracking and logging driver reports.
- Monitor battery status from the NissanConnect EV website and NissanConnect EV app.
- Receive alerts for charge completion and battery status.
- Remotely start and stop climate control and start charging from a mobile device.



**MONITOR ALL INFORMATION YOU NEED FOR YOUR JOB**



STATE OF CHARGE

POWER METER

ESTIMATED RANGE

REMAINING BATTERY CHARGE

With just a glance at your instrument panel, you have all the info you need to manage your range, including charge status and energy usage.

#### UNDER-SEAT SLIDING DRAWER

on the passenger's side gives you a secure way to store items.



**CENTRE CONSOLE** is large enough to hold a laptop computer - it's even designed to hold hanging files.

One screen does so much. Change in delivery address? Get the update via text message, then find your route on the navigation system.

Fold down the passenger seatback for a sturdy and convenient flat writing surface.

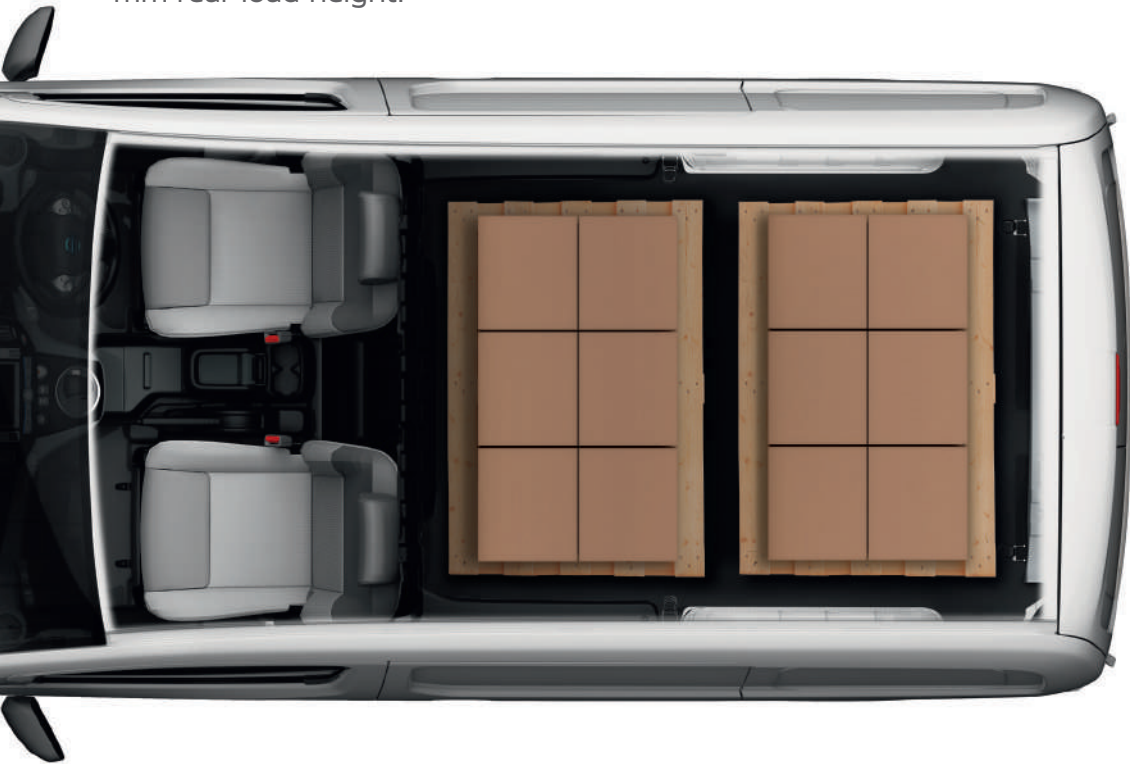
Mounting the transmission on the steering column opens up the space you need to multitask. Get plenty of power up front with a 12-V power supply and USB connection.

## A mobile office that works any-where you go.

**e-NV200 offers an unexpected level of equipment.** The interior design draws inspiration from drivers who need to get work done on the go. The cockpit doubles as an easy-to-use work space, with large-range adjustable seating and versatile storage. And with NissanConnect featuring navigation, hands-free calling and text messaging, and Bluetooth streaming audio, who needs any other office?

# Cargo capacity meets versatility for a perfect fit.

The e-NV200 is designed to meet a variety of needs, with a versatile interior that allows you to configure racks, bins and seating to custom-fit your services. You can even choose between French doors, with panels or windows, and Tailgate. Plus, it's easy to load, thanks to an exceptionally low 524 mm rear load height.

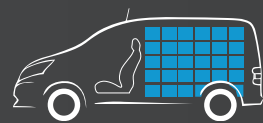


Two standard Euro pallets fit with room to spare.

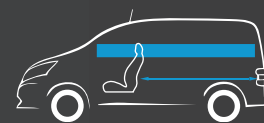
| CARGO AREA/<br>DIMENSIONS | Maximum Length                    | mm             | 2040      |
|---------------------------|-----------------------------------|----------------|-----------|
|                           | Maximum Width                     | mm             | 1500      |
|                           | Maximum Height                    | mm             | 1358      |
|                           | Minimum Width between wheelarches | mm             | 1220      |
|                           | Load Platform Height (Unladen)    | mm             | 523.5     |
|                           | Cargo Volume                      | m <sup>3</sup> | 4.2       |
|                           | Slide Door (Width/Height)         | mm             | 700/1171  |
|                           | Back Door (Width/Height)          | mm             | 1262/1228 |



INCREDIBLE CARGO AREA  
**4.2 m<sup>3</sup>**  
Cargo capacity



2.8m - space for a long ladder (with optional folding bulkhead)



1.22 m between wheel arches  
1.50 m wall-to-wall  
1.36 m stand-up room



# The full kit

## Genuine nissan accessories

**COMPLETE YOUR e-NV200 WITH NISSAN GENUINE ACCESSORIES.** From textile seat covers and sliding door protection grilles to rubber mats and trunk liners, they're custom built, tailored to fit and designed with your specific needs in mind.

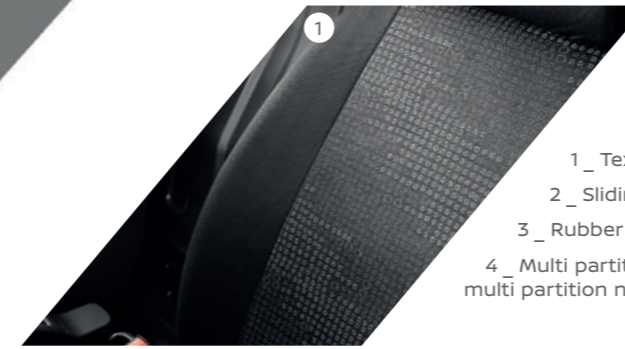
Load carrier 3 bars

Front and rear mudguards

Body side mouldings

French door plastic protection, complete protection 2 parts

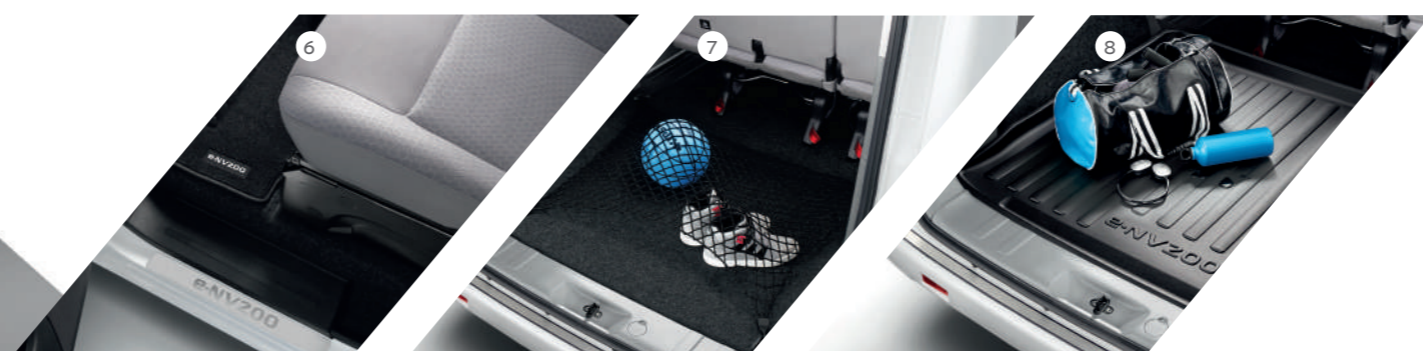
Side bars



- 1\_ Textile seat covers eco material
- 2\_ Sliding door protection grille
- 3\_ Rubber mat
- 4\_ Multi partition net, system bars for multi partition net



- 5\_ Plastic floor protection and trunk entry guard
- 6\_ Entry guard and textile standard mat
- 7\_ Luggage net
- 8\_ Soft trunk liner



## COLOURS



White (S) - QM1



Silver (M) - KLO



Light GREY (PM) - K51



Black (M) - GNO



Red (S) - Z10

## WHEELS

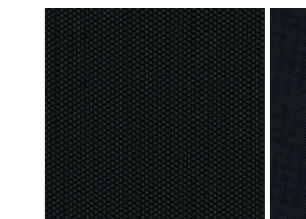


15" WHEEL COVER



15" ALLOYS

## TRIM



DARK TRIM

## DIMENSIONS



| OVERALL DIMENSIONS | A | Length                    | mm | 4 560 |
|--------------------|---|---------------------------|----|-------|
|                    | B | Width with mirrors        | mm | 2 011 |
|                    | C | Width w/o mirrors         | mm | 1 755 |
|                    | D | Height (in running order) | mm | 1 850 |
|                    | E | Wheelbase                 | mm | 2 725 |

|             |  |              |                                     |
|-------------|--|--------------|-------------------------------------|
| ENGINE      | Electric Motor Type                              |              | AC Synchronous                      |
|             | Max. Engine Power                                | kw(PS)/min-1 | 80[109]/3008-10000rpm               |
|             | Max. Torque                                      | Nm/min-1     | 254/0-3008rpm                       |
|             | Max. RPM   |              | 10500                               |
|             | Energy Type                                      |              | Electricity                         |
| DRIVE TRAIN | Gear Ratio                                       |              | 9.3010                              |
|             | Driven Wheels                                    |              | Front                               |
| BATTERY     | Type   |              | Laminated Lithium Ion               |
|             | Voltage  | V            | Nominal Voltage ; 360 V             |
|             | Capacity   | kwh          | 40 kwh                              |
|             | Battery Charging                                 | kW           | 6.6 kW                              |
|             | Charging Time                                    | Hours        | 75 hr (Wallbox/ 40 min Fast Charge) |
| CHARGER     | On-board charger                                 | kW           | 6.6 kW                              |
|             | Fast Charger                                     | kW           | 50 kW                               |
| CHASSIS     | Suspension                                       | Fr           | Independent MacPhearson strut       |
|             |  | Rr           | Torsion beam axle with leaf spring  |
|             | Steering   |              | Electric power assisted             |
|             | Breaking System                                  |              | Electro Hydrostatic Actuator        |
|             | Tyre Size  |              | 185/65R12                           |
|             | Min Turning Circle (Wall to Wall)                | m            | 1113                                |
| PERFORMANCE | Electricity Consumption (WLTP)                   | Wh/km        | 259                                 |
|             | Range (WLTP) Combined                            | km           | 200                                 |
|             | Range (WLTP) Combined                            | km           | 301                                 |
|             | Maximum Speed                                    | km/h         | 123                                 |
|             | Acceleration 0-100 km/h                          | sec.         | 14                                  |
| WEIGHTS     | Gross Vehicle Weight                             | Kg           | 2220                                |
|             | Curb Weight                                      | Kg           | 1515                                |
|             | Maximum Payload                                  | Kg           | 705                                 |
|             | Gross Axle Weight (Fr/Rr)                        | Kg           | 1070/1150                           |
|             | Permissible Axle Weight (Fr/Rr)                  | Kg           | 1180/1200                           |
|             | Max Trailer Capacity (Braked & Unbraked)         | Kg           | 410                                 |
|             | Max. permissible vertical force on coupling ball | Kg           | 75                                  |
|             | Max. Roof Load                                   | Kg           | 100                                 |

## GRADES

### SV 40 kWh VAN STANDARD

- 15" Steel Wheels
- ABS & EBD & VDC
- Immobiliser
- Remote Central Locking
- i-Key with Stop/Start Button
- 2 Speakers
- Radio
- CD Player with AUX Jack, USB Plug & iPod Connectivity
- Bluetooth Connectivity
- Auto Air Conditioning
- Multifunction Steering Wheel with Height Adjustment
- TPMS (Tyre Pressure Monitoring System)
- Approaching Vehicle Sound for Pedestrians (AVSP)
- 6.6 kW onboard Charger
- Quick Charging Port & Battery Cooler
- 2 Charging Cables ( 32 amp Mennekes Cable & EVSE Cable)
- Black Cloth Trim
- Electric Folding Door Mirrors
- Front Power Windows
- 60:40 Rear Door Opening
- Full Metal Partition
- 2 Sliding Doors
- Full Size Spare Wheel

### OPTIONS

- Cold Pack (Heated Steering Wheels & Heated Seats)

### SV PREMIUM 40 kWh VAN ADDITIONAL TO SV

- Passenger Airbags
- Rear View Camera
- Cruise Control & Speed Limiter
- Automatic Headlights with Follow Me Home
- Rain Sensing Wipers
- Cold Pack (Heated Steering Wheel & Heated Seats)
- 4 Speakers
- NissanConnect EV Telematics System with 7" Touch Screen
- Front Fog Lights
- 15" Alloy Wheels

## NISSAN SERVICE CONTRACTS

For total peace of mind and budget control, you can subscribe to a Nissan Service Contract which will cover your periodic maintenance for the mileage and period that suits your business best. This way, you can ensure that your new e-NV200 is serviced by dedicated Nissan technicians.

### AT NISSAN, YOU BRING OUT THE BEST IN US.

You spark our imagination. You provoke our ingenuity. You inspire us to change the rules and innovate. And at Nissan, innovation is not just about additions and extensions; it's about crossing the line to reinvent the status quo. It's about developing unexpected solutions to satisfy your wildest and most pragmatic desires. At Nissan, we design cars, accessories and services that break the mould - making the practical exciting and the exciting practical to offer you a more exhilarating driving experience everyday.



**NISSAN e-NV200 OFFERS YOU:**

For complete peace of mind, when using your vehicle, e-NV200 is covered by warranty up to 3 year / 100,000 KM for mechanical and electric components, with Nissan Assistance included.

Contact your dealer and consult the warranty booklet for more details.

12 year anti-corrosion warranty.

Nissan e-NV200 lithium battery warranty also protects against capacity loss below 9 bars of capacity (out of 12) for a period of 8 years / 160,000 KM.

\*Body parts and paint excluded during year 4 and year 5. Terms

and exclusions apply accordingly. For further information,

Please see Extended warranty terms and conditions.

The logo features the word "NISSAN" in a bold, sans-serif font, followed by a stylized blue and white icon representing a car's front end. To the right of the icon, the words "INTELLIGENT MOBILITY" are written in a larger, bold, sans-serif font. A red horizontal bar is positioned above the text, with four small white squares on the right side.

## NISSAN INTELLIGENT MOBILITY

Nissan Intelligent Mobility guides everything we do. We're using new technologies to transform cars from mere driving machines into partners. Together the journey is more confident, connected, and exciting. Whether it's cars that share the task of driving with you, or highways that charge your EV as you go along, it's all in the very near future. And it's a future already taking shape in the Nissan you drive today.

Ready to get the Nissan e-nv200? Visit us online to order.

[www.nissan.ie/vehicles/new-vehicles/e-nv200](http://www.nissan.ie/vehicles/new-vehicles/e-nv200)

Follow Nissan on:



Every effort has been made to ensure that the content of this publication is correct at the time of going to press (April 2018). This brochure has been produced featuring prototype vehicles. In accordance with the company's policy of continuously improving its products, Nissan Europe reserves the right to change at any time the specification and the vehicles described and shown in this publication. Nissan dealers will be informed of any such modifications as quickly as possible. Please check with your local Nissan dealer to receive the most up-to-date information. Because of the limitations of the printing processes used, the colours shown in this brochure may differ slightly from the actual colours of the paint and interior trim materials used. All rights reserved. Reproduction in whole or part of this brochure without the written permission of Nissan Europe is forbidden.

This brochure is made from chlorine free paper - MY18 ENV200 LAUNCH BROCHURE RHD - Printed in EU.  
Created by DESIGNORY, France and produced by eg+ worldwide, France - Tel.: +33 1 49 09 25 35

Dealer stamp: